

# How To Take Care Of Your LANG WINDOWS

*Lang Exterior*



Congratulations! Thank you for your new window purchase. These quality built Lang windows will increase energy efficiency, and bring enjoyment and comfort to your home.

The following pages will walk you through the steps to care for your windows.

## Table Of Contents

Cleaning Vinyl and Glass	2
How To Clean	3-4
Condensation	5-6
Additional Information	7-8
Energy Rating Definitions	9
Window Options	10



IT STARTED WITH  
*One man,  
one product.*

Lang Exterior opened for business in 1953 at a small garage on Chicago's Southwest side. Eugene Lang became a manufacturer, salesman and installer of aluminum storm windows, and built up a company that has become an industry leader that now provides a full line of vinyl products.



## Vinyl Cleaners *(PowerWeld, Rezilience, Renaissance, Glide and Decorative Dimensions)*

The Vinyl Window and Door Institute recommendations

### Recommended

- ✓ Ajax Liquid Cleaner
- ✓ Lysol Cleaner
- ✓ Vinegar and Water
- ✓ Ivory Liquid

### Not Recommended *(May cause vinyl to yellow)*

- ✗ Clorox
- ✗ Pine Power
- ✗ Grease Relief
- ✗ Tide
- ✗ Nail Polish Remover
- ✗ Gasoline or Turpentine
- ✗ Soft Scrub
- ✗ Many similar store bought brands

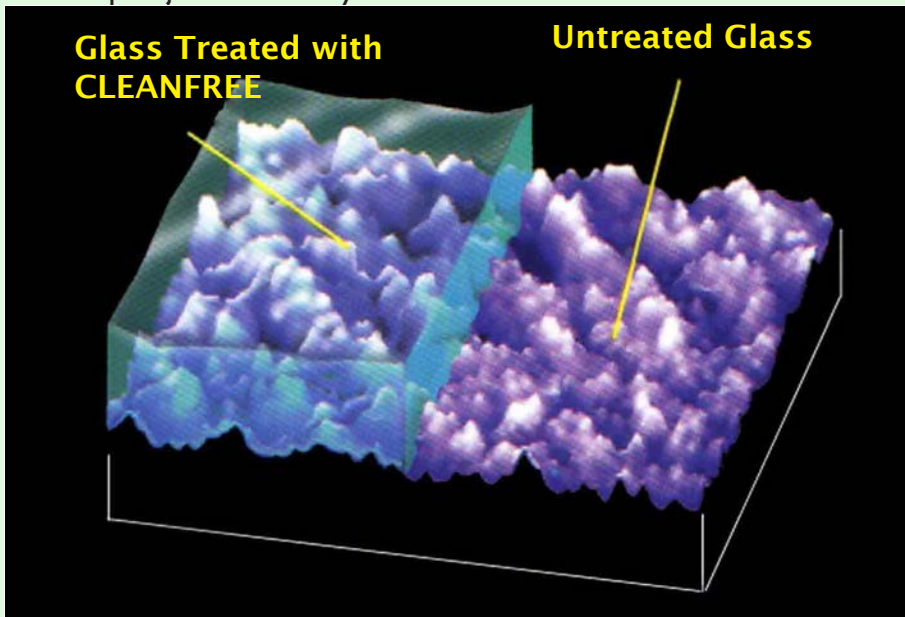
For interior woodgrain or exterior beige, cocoa brown, clay, or bronze, use **ONLY** mild soapy water. Please be sure not to leave excess cleaners on products as it could effect the finish of the vinyl window. Only use soft cloths and refrain from using any abrasive cloths.

## Glass Cleaners

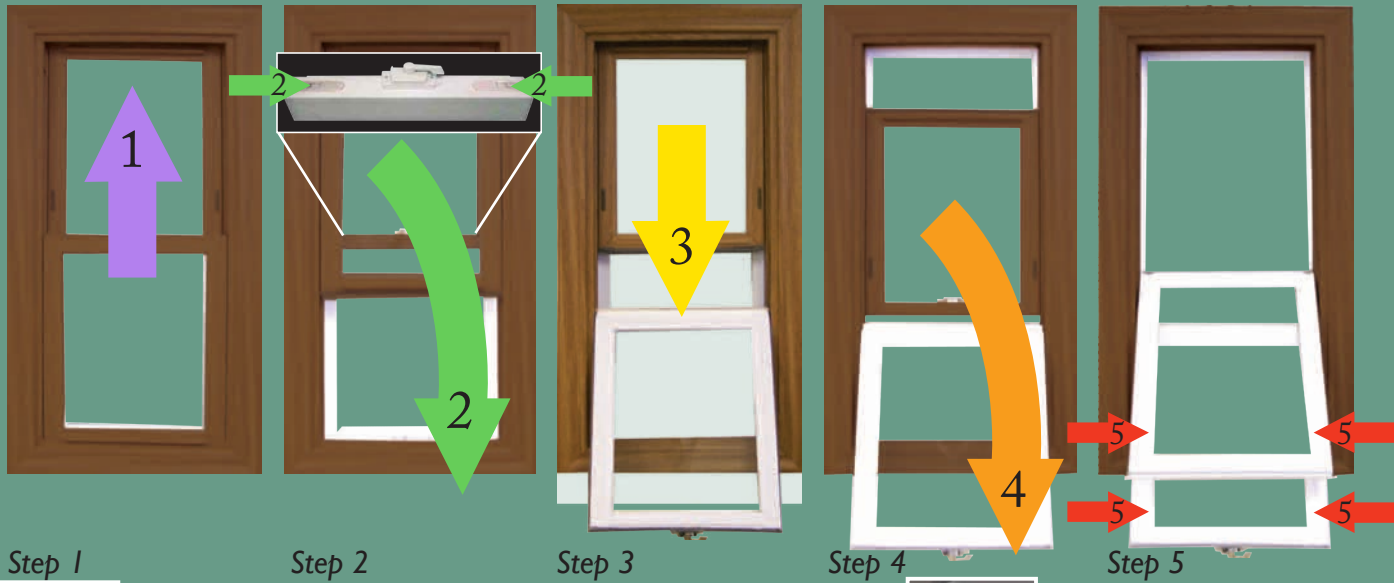
For best results, Lang Exterior recommends store-bought glass cleaners, soapy water, or a mild vinegar and water solution. Wipe dry with a soft lint-free towel or newspaper, etc. Be sure not to use sharp objects. Do not use excessive amounts of cleaner as it may run down into the glass seal causing damage. Be sure to wipe clean all excess cleaners. If not, it may void warranty.

## Cleaning and Caring for Clean Free Windows

Use mild soapy water to clean windows with Clean Free Glass. Avoid using scouring pads, Comet, Soft Scrub, ammonia or alcohol based products. Do not use sharp objects to clean your windows.



## Double Hung Window (PowerWeld, Rezilience, Platinum 2400)



Step 1

Step 2

Step 3

Step 4

Step 5



## Sliding Window



Step 1

Step 2

Step 3

Step 4

## Casement Window (Renaissance, Decorative Dimensions)



Step 1

Step 2

Step 3

## How to Clean a Double Hung Window

### To Tilt the Sashes - Please refer to steps on page 3

1. Unlock the window and raise the bottom sash a minimum of three inches.
2. Push both tilt latches located on the top of the sash toward the center of the sash to disengage. With both hands, pull the window sash towards you to a horizontal position. *(Carefully do this, as the sash may be heavy)*
3. Support the lower sash and clean. Lower the upper sash at least two inches.
4. Repeat step two. *(Note: the Upper sash cannot be tilted in unless lower sash is tilted in).*
5. Support the upper sash and clean. *(Note: be cautious when operating your windows. Do not leave any window unattended while cleaning it.) Always practice safety when operating your window. Never reach or lean out of the window.*

### To Close the Sashes Lift sash back up to upright position

2. Make sure latches located at the top of the sash are locked into place to prevent window sash from falling in. Then (step 1) slide sash up to the top of the main frame. Hold the top rail of the bottom sash with both hands and with even pressure push the window sash into an upright position all the way into the track of the window frame. Make sure the latches lock into place before you remove your hands. Pull this sash down to bottom of window and lock the lock in the middle of the window.

## How to Clean a Sliding Window

### To Remove the Sash - Please refer to steps on page 3

1. Open the window and slide the interior sash all the way to the opposite side past the two anti-lift blocks that are located in the top of the inside track.
2. Carefully lift the interior sash into the top of the window main frame as high as possible and pull the bottom of the interior sash towards you, releasing the sash from the window frame and lower sash gently to clean. *(Once again be careful, sash may be heavier than it looks)*
3. Slide the exterior sash all the way to the opposite side past the two anti-lift blocks.
4. Carefully lift the exterior sash into the header of the main frame as high as possible and pull the bottom of the exterior sash towards you, releasing the sash past the main frame and lower sash gently to clean. *(Note: Do not leave any window unattended while cleaning it.) Always practice safety when operating on your window. Never reach or lean out of the window.*

### To Replace the Window Sashes Double Hung / Sliders

1. Repeat steps 1-3 (Double Hung) on page 3. With both hands hold the sash. While using equal pressure push down on the right, and lift up on the left. Sash will pop out. Please be careful when taking out the window sash. To reinstall, hold the window sash with both hands and push up from left to right to engage pivot bars into shoes evenly without bending or twisting the glass so it doesn't break or cause a stress crack.
2. Repeat steps 1 & 2 (Sliding Window) from the cleaning instructions in order to remove sash.
3. To replace sashes into sliding window, carefully lift up the sash into the header of the frame until it hits the top then push window sash into place and slide to proper side. *(Note: Using equal pressure hold the window sash with both hands and push up from left to right evenly without bending or twisting the glass so it doesn't break or cause a stress crack.)*

## How to Clean a Patio Door

1. Clean interior and exterior door sashes. *(Note: Do not need to remove sashes on a patio door.)*

## How to Clean a Casement Window

### To Open and Close the Window Sash - Please refer to steps on page 3

1. Pull all of the screen tabs toward the inside of the window, then pull them toward you to remove the screen.
2. Unlock the window latch and crank the window clockwise all the way into an open position.
3. Reach between the window sash and the window frame to clean the exterior. *(Note: Do not leave any window unattended while cleaning it and be very careful not to lean out of any window.)*
4. Crank counter-clockwise to close and replace the screen. Lock window latch in a down position.

*\*Manufacturer is not responsible for any damage of any type due to the written instructions herein.*



Actual Condensation on a Window

## About Condensation

As most of us know, windows and doors are inanimate objects and do not make moisture. However, there are areas where condensation typically occurs and are most visible. If this occurs, it may become a problem, but it is not the fault of your new windows.

A build up of condensation can occur in many areas of a home, but the primary areas are on windows, mirrors, and doors. Condensation is directly related to the humidity, or amount of moisture, that is contained within the air inside your home. Air that contains excessive amounts of moisture is classified as “high humidity”.

Visible condensation occurs when the warmer, humid air comes in contact with dryer, cooler surfaces. The contact between the warmer and cooler surfaces causes the water molecules to bind together and adhere to the cooler glass surface, thus creating water droplets. Air that contains more moisture inside (or is more humid) will tend to contribute to more condensation buildup on windows and doors.

Condensation can occur during any season throughout the year, but it is most prevalent in the winter months as the cold outside air causes the surface temperature of the window glass to be much colder than the air temperature inside the home. Other contributing factors may include plants, fish tanks, humidifiers, air vents, appliances, excessive cooking, poor ventilation and severe temperature fluctuations.

The type or style of your window may also determine the amount of condensation you may experience. For example, external windows such as Bays, Bows, or Garden Windows have more of a tendency to condensate since the structure of these windows may not offer optimum airflow. In addition, since these window types are constructed to extend from the exterior of the wall, there is typically more surface area exposed to the elements that can cause a larger temperature gradient between the glass and interior air. Since these windows are extended from the home and may not have the ability to be as warm as the rest of the home.



## Why Do Modern Homes Have Moisture Problems?

As the construction of the modern home gets “tighter” and more energy efficient, the air exchange between the inside and outside is drastically reduced. Many newer homes are now wrapped with a vapor barrier to prevent moisture from getting in, which also helps to keep the existing air from getting out. The key is ventilation. A properly ventilated house will have less condensation.

## Some Tips to Help Reduce Your Home’s Humidity

- Be sure that all ventilation to/from the outside is functioning properly. Use exhaust fans when using appliances or in areas that may create moisture such as showers, sinks, dishwashers, and laundry machines. Allow the exhaust fans to run during and after activities to help reduce the relative humidity.
- The process of heating your home will reduce the relative humidity if a dry heating source is available.
- Ensure that any humidifying device in your home is properly adjusted to offer the correct level of humidity. If you suspect that you have excessively humid air, the use of a de-humidifier may be warranted.
- Be sure that louvers in attics or basement crawl spaces are open and provide adequate ventilation.
- Increase ventilation by opening fireplace dampers or by running ceiling fans for adequate air circulation. On dry days, open your windows and doors to air out the house to help the existing humidity out.
- When you have your humidifier on, the objects in your home also absorb moisture, so just turning off your humidifier or lowering it may not do the trick immediately. The moisture that is trapped in your carpets, sofas, drapes, cabinets, hardwood floor, etc. will still give off humidity they have absorbed during the time the humidifier was on; so give them time to release the water. After your condensation is gone you can then start to reuse your humidifier by gradually adding the moisture back into your home. Do this a little at a time or you will be back where you started. If condensation starts to re-occur, turn down your humidifier.

\*If these tips do not work consider talking to your heating contractor about an outside air intake for your furnace or the installation of a de-humidifier or ventilation fans. Remember, your new windows are doing the job by trapping the existing air into your home.

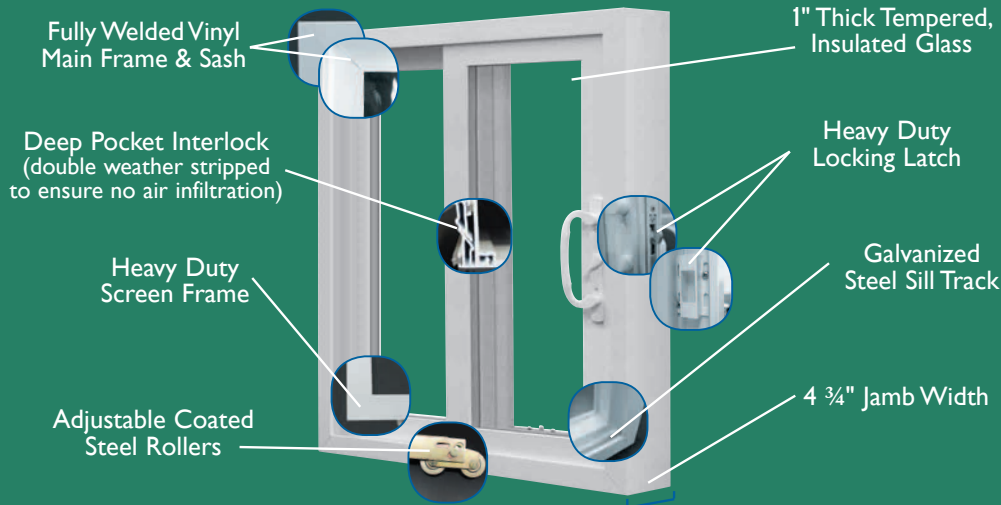
## Rolling Drafts

Rolling drafts occur when the heat source of a home is located near the window. If the vent is either under the window or blows down onto the wall where the window is located it will cause the cool air to roll off of the window and make the window feel as though you have a draft, but in reality what is happening is the air is moving down the wall of the surface of the glass and causing a cool feeling. To solve this problem you need to divert the heat from blowing onto the window.

Glass will always be the coldest surface of the window and it will steal your body heat when you stand next to it in the very cold winter days causing one to shiver. This does not however mean the window is leaking air. The glass has a colder temperature than your body does at 98.6 degrees so it can cause you to feel cold, if this occurs just realize there is nothing wrong with your windows, it’s just cold outside.

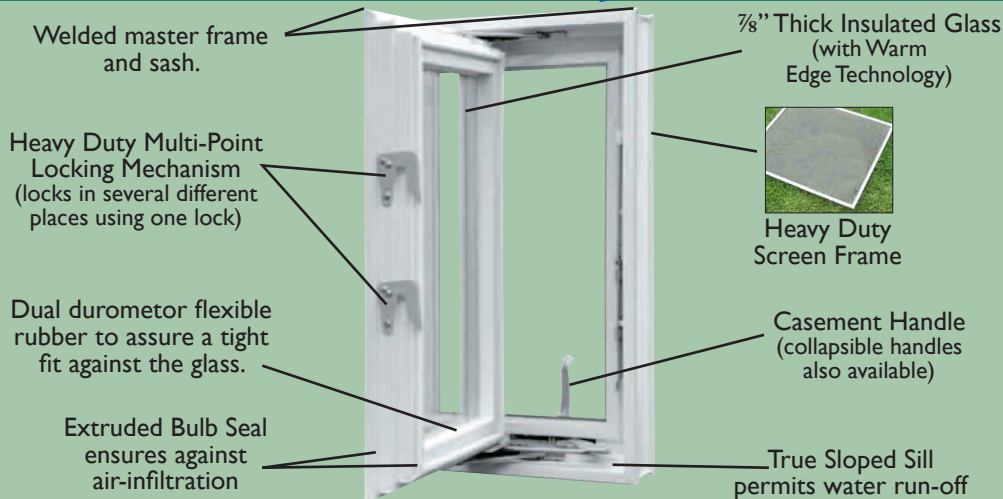


# Patio Door

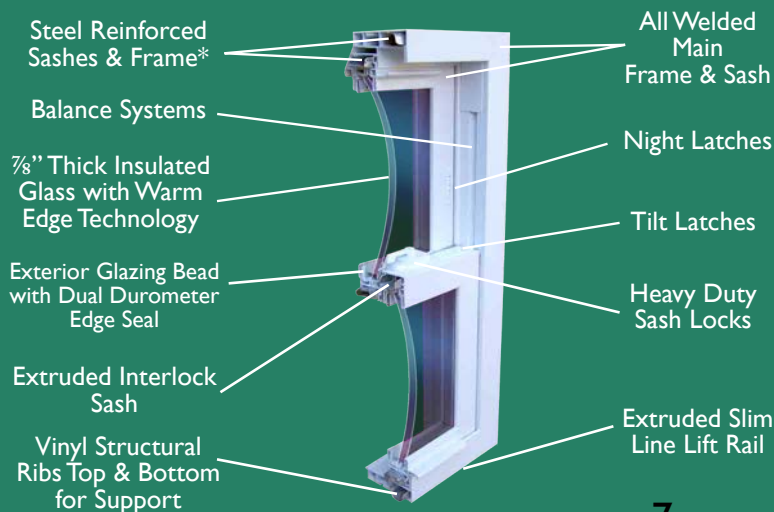


# Casement

*Stainless steel screws and specially coated hardware help prevent rust.*



# Double Hung



All product and hardware styles are subject to change

\*Patent Pending

\*Widths of Master frames & Sashes



## Window Types

### *Double-hung window*

A window unit that has two operable sashes that move vertically in the frame. (see page 3)

### *Sliding window*

A window fitted with one or more sashes opening by sliding horizontally in frame.

(both sashes move, see page 3).

### *Picture window*

A fixed window that does not have any operation.

### *Casement window*

A window unit in which the single sash cranks outward to the right or left. (see page 3)

## Bows, Bays and Garden Window Advice

### **Garden Window:**

Something to keep in mind when you use your windows as a place to put plants; use a protective barrier to prevent damage to your window. It is highly recommended to not only put a planter dish under the plant but also some type of protective barrier between the plant dish and the wood veneer. Wood needs to be stained and sealed. Lang is not responsible for any water damage done to the wood.

### **Bay Window:**

Our window is built in 3 sections. They are available in Double Hungs or Casements. Center window is typically larger, but it can be made in the 1/3, 1/3, 1/3, ratio depending on the size.

### **Bow Window:**

Curved frames made out of casement or double hung windows. Available in 3, 4, and 5 lites. Windows are usually divided equally depending on the size.

***Bows, Bays, and Garden Windows must be sealed after installation if a formica finish was not chosen.***



## Glossary of Energy Ratings Terms

**U-Value:** The rate of heat flow through a window; the lower the value, the better the insulating quality. U-Value can be compared to R-Value by dividing 1 by the R-Value. (Thus, an R-Value of 2 equals a U-Value of 0.5) Most commonly used to measure the total window units insulating value. This method is a measurement of actual energy transmitting through the window.

**R-Value:** The resistance of a material to heat flow; the higher the number the better the insulating quality. This common measurement can be compared to U-Value by dividing 1 by the R-Value.

**Visible Transmission:** An energy performance rating that measures the amount of visible light transmitted through the total window unit. The lower the windows SHGC, the less solar heat transmits.

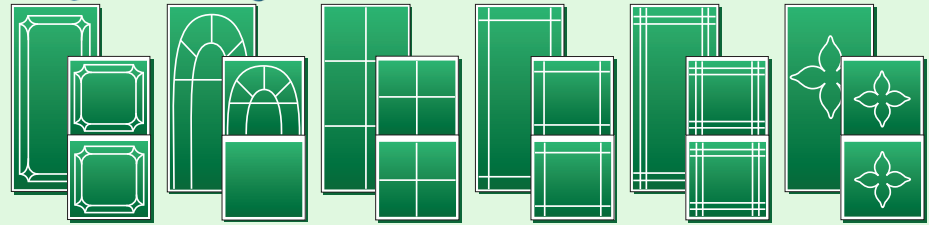
**Solar Heat Gain Coefficient (SHGC):** An energy performance rating that measures the fraction of incident solar radiation admitted through the total window unit. The lower the windows SHGC, the less solar heat transmits.

**Ultra Violet Transmission (UV):** UV radiation is the main source of fading furnishings, drapes, and carpeting. The lower the UV transmission number the better fade protection.

**Low E:** There are two types of Low E glass: Hard Coat and Soft Coat. Tin is applied directly to the molten glass to make Hard Coat. The Soft Coat process commonly involves the application of a thin layer of silver applied directly to the glass surface. Soft Coat Low E glass has a higher SHGC value. (Translation lower cooling cost).

## Available Window Options

### V-Groove Glass



Victorian

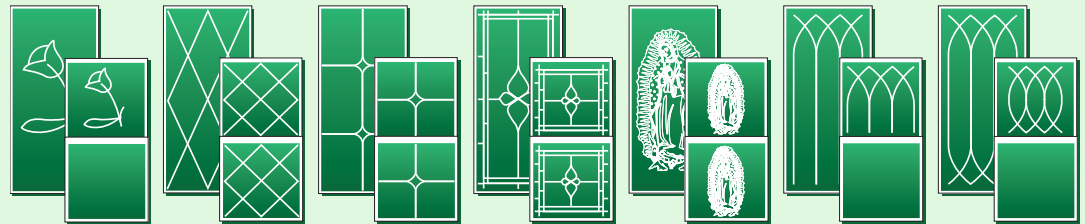
Archview

Colonial

Single  
Prairie

Double  
Prairie

Gothic



Tulip

Diamond

Marquise

Grand  
Marquise

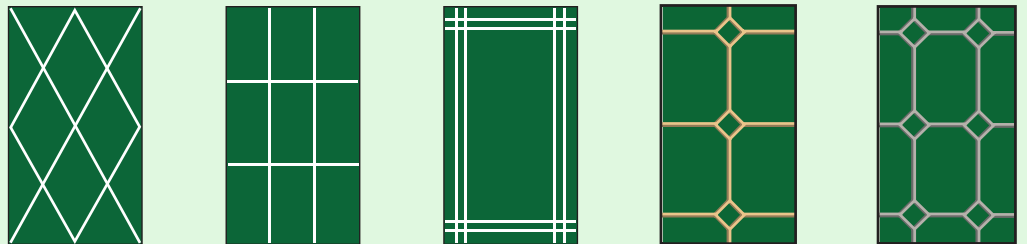
Guadalupe

Cathedral

Cathedral  
Mirrored

\*Lang Exterior uses superior technology to groove into the glass causing a prism and sparkle effect, while our competitors use tape which gets brittle and turns yellow over time. Custom shapes available.

### Grid Patterns



Diamond

Colonial

Also in Brass  
& Nickel

Prairie

Also in Brass  
& Nickel

Diamond Brass

Also in Nickel

Vintage Nickel

Also in Brass

### Laminated Wood Trim Options (Available in All Woodgrain Colors)



Flexible Quarter Round



Base Shoe



Round Edge Stop



Quarter Round



Colonial Casing



Window Stool



Jamb Liner

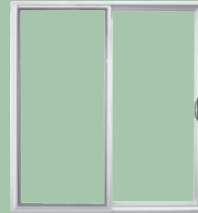
# Did you know

all the products that Lang has to offer your home?

- Double Hungs **Powerweld**



- Patio Door **Glide**



- Aluminum **ULTRA TUFF**



- Sliders 2-3 Lite **Powerweld**



- Platinum 2400 **PLATINUM 2400 SERIES**



## Glass Options



**CLEANFREE**



- 1-2-3-4-5 section Casements **Renaissance**
- Storm Window **barrier**



Silence is Golden

- Bays, Bows, Garden **Decorative Dimensions**



- Glass Blocks and Vents

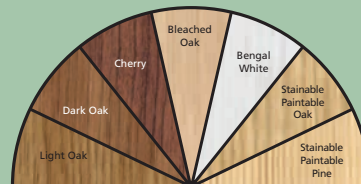


Foam Fill

- Decorative Options for your glass
- Trim out your entire openings with our decorative casing

## 37 Color Combinations!

If you have any questions, check us out on the web at [www.langexterior.com](http://www.langexterior.com)



*Lang Exterior hopes you enjoy your new windows!*



Lang Exterior Inc. 800-737-4144 [www.langexterior.com](http://www.langexterior.com)

*Lang Exterior*

